

# Marine Resources Division

An Overview for the Law Enforcement Subcommittee  
House Legislative Oversight Committee



Robert H. Boyles, Jr.  
Deputy Director for Marine Resources  
South Carolina Department of Natural Resources

9 October 2017



## Marine Resources Division **Vision:**

Better decisions, better  
resources, better access,  
improved quality of life



# Marine Resources Division

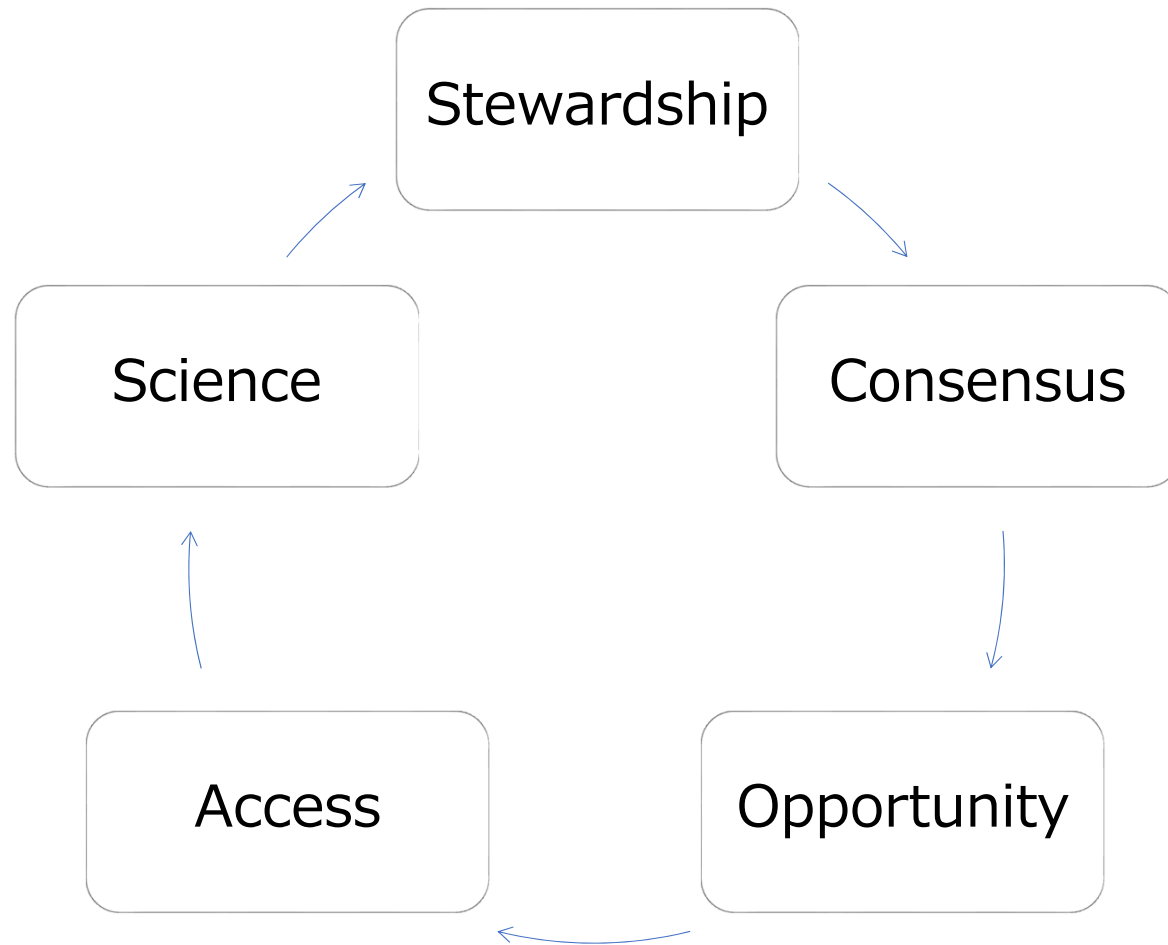
## **Goal:**

To sustain the state's living marine resources for the cultural, recreational, commercial, and economic benefit of the state's citizens and visitors











## South Carolina Department of Natural Resources Marine Resources Division FY 2017

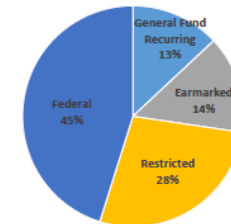
**Purpose:** To sustain the state's living marine resources for the cultural, recreational, commercial and economic benefit of the state's citizens and visitors.

- SCDNR issued 230,497 recreational saltwater licenses plus >200,000 active gratis/senior lifetime licenses.
- Commercial fishermen took 29,255 trips worth \$25.5 million.
- Licensed fishing piers hosted 214,600 anglers.
- Area of ocean bottom managed totaled 869 sq. miles, while estuarine bottom managed totaled 344 sq. miles.
- Staff interviewed 4,896 saltwater anglers for the marine recreational information program.
- Staff issued 1,511 commercial saltwater permits.
- Eleven artificial reef sites grew through the addition of 95,000 cubic feet of habitat, bringing the total to 40 sq. miles of reef sites.
- Staff managed 153,098 acres of public shellfish harvesting grounds.
- Partners and staff recaptured and recycled more than 29,000 bushels (~750 tons) of oyster shell.
- Staff planted 23,526 bushels of oyster shell to rebuild reefs.
- Staff spent 281 days at sea aboard large research vessels.

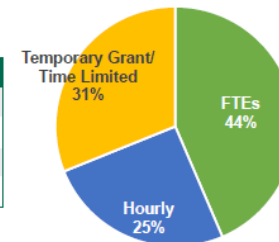


- Staff published more than 100 technical reports and 25 research papers.
- More than 568 tagged fish and sea turtles of 26 species were detected by SCDNR acoustic receivers.
- Inshore biologists conducted 945 trammel net sets, 301 electrofish sets, 82 trawls, and 286 longline sets, tagged 3,854 fish and processed 10,962 fish in the laboratory.
- Geneticists processed 8,163 tissue samples from 13 species.
- Offshore biologists deployed 1,930 trawls, chevron traps and longlines between NC and FL and caught 944,320 fish, crustaceans, sea turtles, squid and jellyfish from more than 300 species.
- More than 1,300 volunteers gave 16,000 hours and drove 91,000 miles in support of SCDNR's sea turtle program.
- Recreational anglers tagged and released 5,491 saltwater gamefish and reported the recovery of 860 tagged fish.
- Stocked 2,042,690 marine gamefish in coastal waters.

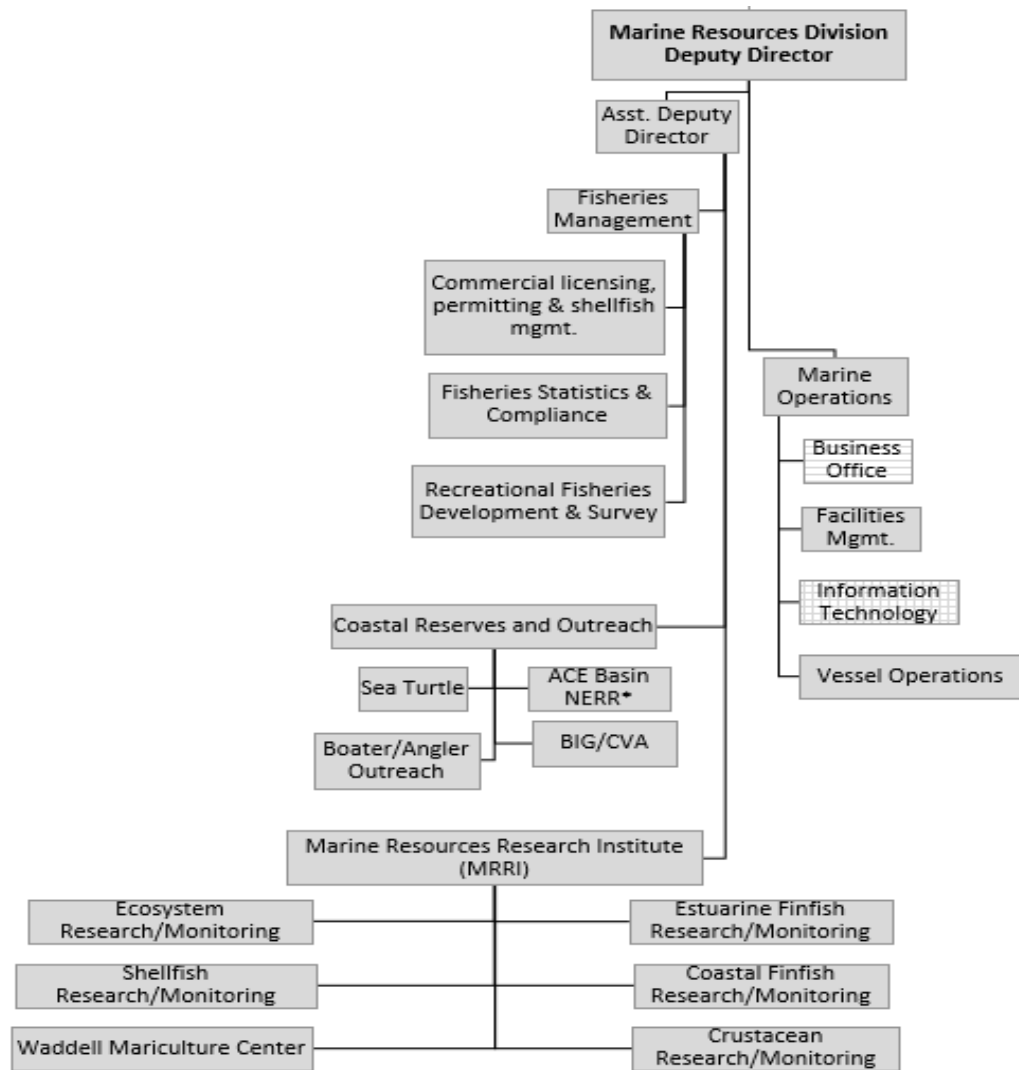
Expenses	Amount
General Fund Recurring	\$2,302,416
Earmarked	\$2,525,355
Restricted	\$4,863,117
Federal	\$7,971,431
<b>Total Expenses</b>	<b>\$17,662,319</b>



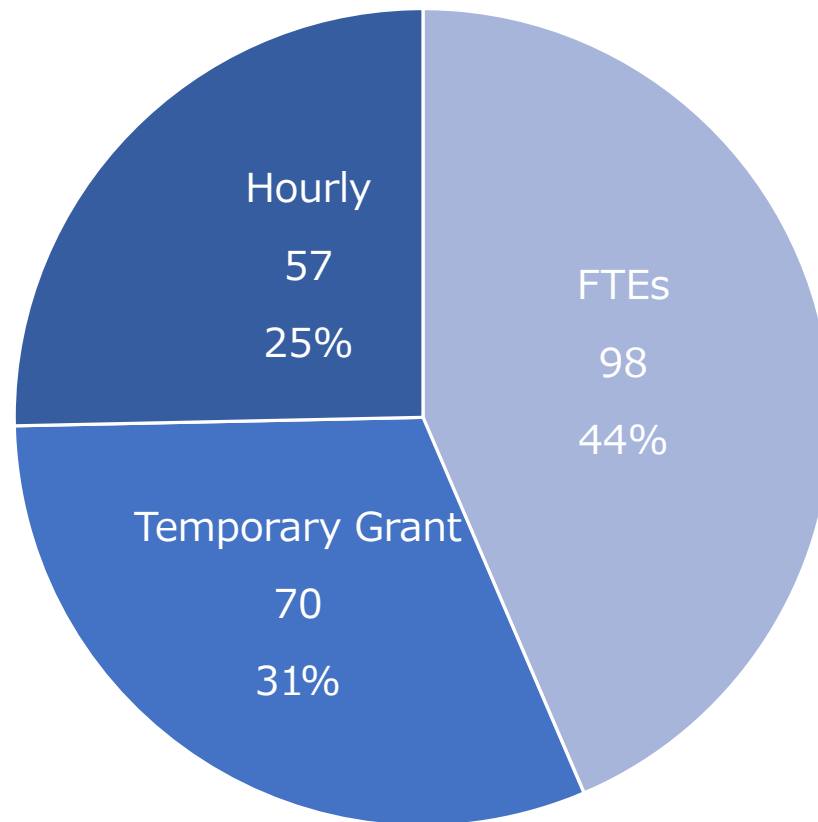
Employees	Count
FTEs	98
Temporary Grant/Time Limited	70
Hourly	57
<b>Total</b>	<b>225</b>







The Marine Resources Division has 225 employees with a 9.03% turnover rate.



## The Marine Resources Division's deliverables include:

- Conduct research, surveys, and investigations (require)
- Provide for the protection of salt waters and habitats (require)
- Provide for development of saltwater fisheries/mariculture (require)
- Analyze data related to marine resources stewardship (require)
- Regulate marine species (require)
- Issue saltwater commercial licenses and permits (require)

## The Marine Resources Division's deliverables include:

Conduct research, surveys, and investigations (require)

Provide for the protection of salt waters and habitats (require)

Provide for development of saltwater fisheries/mariculture (require)

Analyze data related to marine resources stewardship (require)

Regulate marine species (require)

Issue saltwater commercial licenses and permits (require)

## The Marine Resources Division's deliverables include:

- Conduct research, surveys, and investigations (require)
- Provide for the protection of salt waters and habitats (require)
- Provide for development of saltwater fisheries/mariculture (require)
- Analyze data related to marine resources stewardship (require)
- Regulate marine species (require)
- Issue saltwater commercial licenses and permits (require)

## The Marine Resources Division's deliverables include:

Conduct research, surveys, and investigations (require)

Provide for the protection of salt waters and habitats (require)

Provide for development of saltwater fisheries/mariculture (require)

Analyze data related to marine resources stewardship (require)

Regulate marine species (require)

Issue saltwater commercial licenses and permits (require)

## The Marine Resources Division's deliverables include:

Conduct research, surveys, and investigations (require)

Provide for the protection of salt waters and habitats (require)

Provide for development of saltwater fisheries/mariculture (require)

Analyze data related to marine resources stewardship (require)

Regulate marine species (require)

Issue saltwater commercial licenses and permits (require)

## The Marine Resources Division's deliverables include:

Conduct research, surveys, and investigations (require)

Provide for the protection of salt waters and habitats (require)

Provide for development of saltwater fisheries/mariculture (require)

Analyze data related to marine resources stewardship (require)

Regulate marine species (require)

Issue saltwater commercial licenses and permits (require)



## The Marine Resources Division's deliverables include:

Conduct research, surveys, and investigations (require)

Provide for the protection of salt waters and habitats (require)

Provide for development of saltwater fisheries/mariculture (require)

Analyze data related to marine resources stewardship (require)

Regulate marine species (require)

Issue saltwater commercial licenses and permits (require)

# Potential harms to the Marine Resources Division include:

Saltwater fisheries overharvested/collapsed

Loss of employment and access to local fisheries/seafood

Loss of revenue

Non-residents have unfettered access to SC resources

Federal mandates unmet – non-compliance

No data to inform General Assembly

Impaired quality of life/competitive advantage

# Potential harms to the Marine Resources Division include:

Saltwater fisheries overharvested/collapsed

Loss of employment and access to local fisheries/seafood

Loss of revenue

Non-residents have unfettered access to SC resources

Federal mandates unmet – non-compliance

No data to inform General Assembly

Impaired quality of life/competitive advantage

## Potential harms to the Marine Resources Division include:

Saltwater fisheries overharvested/collapsed

Loss of employment and access to local fisheries/seafood

Loss of revenue

Non-residents have unfettered access to SC resources

Federal mandates unmet – non-compliance

No data to inform General Assembly

Impaired quality of life/competitive advantage

# Potential harms to the Marine Resources Division include:

Saltwater fisheries overharvested/collapsed

Loss of employment and access to local fisheries/seafood

Loss of revenue

Non-residents have unfettered access to SC resources

Federal mandates unmet – non-compliance

No data to inform General Assembly

Impaired quality of life/competitive advantage

## Potential harms to the Marine Resources Division include:

Saltwater fisheries overharvested/collapsed

Loss of employment and access to local fisheries/seafood

Loss of revenue

Non-residents have unfettered access to SC resources

Federal mandates unmet – non-compliance

No data to inform General Assembly

Impaired quality of life/competitive advantage

## Potential harms to the Marine Resources Division include:

Saltwater fisheries overharvested/collapsed

Loss of employment and access to local fisheries/seafood

Loss of revenue

Non-residents have unfettered access to SC resources

**Federal mandates unmet – non-compliance**

No data to inform General Assembly

Impaired quality of life/competitive advantage

# Potential harms to the Marine Resources Division include:

Saltwater fisheries overharvested/collapsed

Loss of employment and access to local fisheries/seafood

Loss of revenue

Non-residents have unfettered access to SC resources

Federal mandates unmet – non-compliance

No data to inform General Assembly

Impaired quality of life/competitive advantage



## Potential harms to the Marine Resources Division include:

Saltwater fisheries overharvested/collapsed

Loss of employment and access to local fisheries/seafood

Loss of revenue

Non-residents have unfettered access to SC resources

Federal mandates unmet – non-compliance

No data to inform General Assembly

Impaired quality of life/competitive advantage

# Marine Resources Division Revenue

Revenue Source	Recurring or one-time?	State, Federal, or Other?	Total Revenue generated by June 30, 2016 (end of 2015-16)	Total revenue estimated to generate by June 30, 2017 (end of 2016-17)
CCEHBR Bldg Rent, Research Contracts, Vessel and Motor Pool accts, Saltwater Pier Tax, Fishing License plate	Recurring	Other	\$2,278,425	\$2,398,672
Heritage Trust Fund-Document Stamp	Recurring	Other	\$0	\$160,000
Saltwater Recreational Fishing Licenses	Recurring	Other	\$2,164,874	\$2,342,523
3 Year Saltwater Fishing Licenses	Recurring	Other	\$196,027	\$177,603
Commercial Saltwater licenses; Culture & Mariculture Permit Fees	Recurring	Other	\$341,017	\$346,113
Morgan Island Rent	Recurring	Other	\$1,285,261	\$1,079,897
Indirect Cost Recovery	Recurring	Other	\$417,744	\$436,537
<b>TOTAL</b>			<b>\$6,683,348</b>	<b>\$6,941,345</b>

# Marine Resources Division Expenditures

Revenue Sources Utilized	Recurring or one-time?	State, Federal, or Other?	Organizational Unit	Spent to Achieve Agency's Comprehensive Strategic Plan in 2016-17	Budgeted to spend to Achieve Agency's Comprehensive Strategic Plan in 2017-18
General Fund	Recurring	State	Agency	\$2,302,416	\$2,202,650
Federal Awards	Recurring	Federal	Agency	\$7,971,431	\$8,878,804
Federal Awards, construction/land acquisition	One-time	Federal	Agency	\$168,361	\$0
Non-recurring General Funds designated for Capital Projects	One-time	Other	Agency	\$682,158	\$1,400,000
Agency Funds	One-time	Other	Agency	\$471	\$0
Cash Transfer	Recurring	Other	LE	\$0	\$40,000
Boat Titling & Registration Fees	Recurring	Other	OSS	\$42	\$0
Cash Transfer	Recurring	Other	OSS	\$21,178	\$0
CCEHBR Bldg Rent, Research contracts, Vessel and Motor Pool accts, Saltwater Pier Tax, Fishing License plate	Recurring	Other	MRD	\$2,504,177	\$2,074,980
Heritage Trust Fund-Document Stamp	Recurring	Other	MRD	\$79,703	\$83,791
Saltwater Recreational Fishing Licenses	Recurring	Other	MRD	\$2,486,992	\$2,595,500
Commercial Saltwater licenses; Culture & Mariculture Permit Fees	Recurring	Other	MRD	\$422,603	\$888,250
Morgan Island Rent	Recurring	Other	MRD	\$1,311,176	\$1,239,868
Indirect Cost Recovery	Recurring	Other	MRD	\$514,724	\$523,278
Tax Check Off; License Plate	Recurring	Other	WFF	\$95,835	\$45,000
3 Year Saltwater Fishing Licenses	Recurring	Other	MRD	\$0	\$0
<b>TOTAL</b>				<b>\$18,561,267</b>	<b>\$19,972,121</b>



R.H. Boyles, Jr. SCDNR

# Marine Resources Division Strategies and Objectives

	2016 - 2017		2017 - 2018	
	FTE equivalents used	Total spent	FTE equivalents used	Total budgeted
<b>Strategy 3.1 - Conduct research on and monitor Marine Species.</b>				
<b>Objective 3.1.1 - Determine the biology, ecological relationships, threats and critical needs of living marine resources of SC.</b> <ul style="list-style-type: none"> <li>Partner(s), by segment: Federal and state government; higher education institutes; non-profit entities; and private individuals</li> </ul>	8.55 FTE 17.70 TG	\$2,529,547 (3.08%)	8.55 FTE 17.70 TG	\$2,726,795 (3.32%)
<b>Objective 3.1.2 - Monitor population status and trends of living marine resources.</b> <ul style="list-style-type: none"> <li>Partner(s), by segment: Federal and state government</li> </ul>	13.00 FTE 18.70 TG	\$3,243,976 (3.95%)	13.00 FTE 18.70 TG	\$3,500,257 (4.26%)
<b>Objective 3.1.3 - Examine the social and economic importance of marine resources to SC.</b> <ul style="list-style-type: none"> <li>Partner(s), by segment: Private business</li> </ul>	0.60 FTE	\$74,850 (0.09%)	0.60 FTE	77,033\$ (0.09%)
<b>Objective 3.1.4 - Quantify and monitor marine habitats and water quality.</b> <ul style="list-style-type: none"> <li>Partner(s), by segment: Federal and state government; and private individuals</li> </ul>	2.30 FTE 4.90 TG	\$1,031,307 (1.25%)	2.30 FTE 4.90 TG	\$1,54,133 (1.28%)

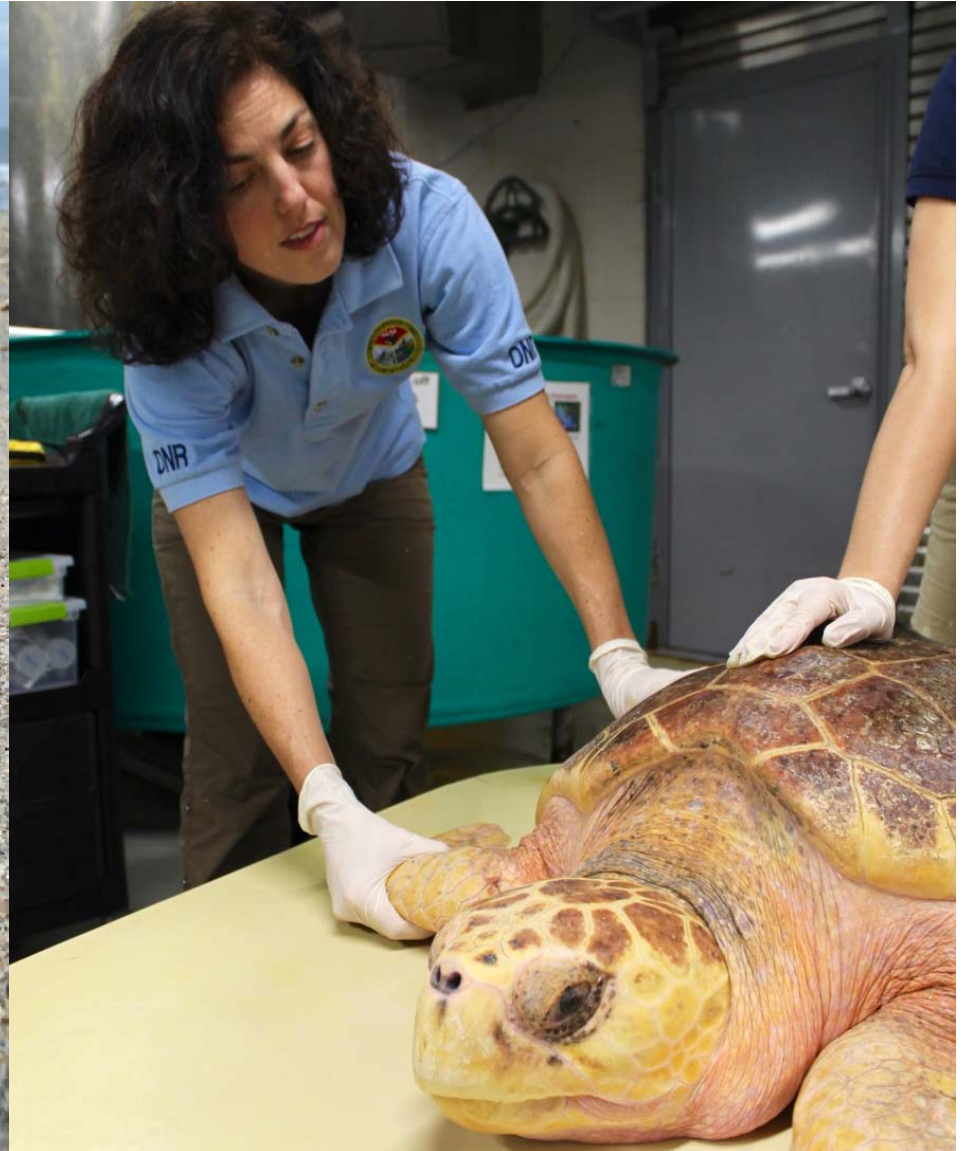
# Marine Resources Division Performance Measures

Performance Measure	Type of Measure	2013-14	2014-15	2015-16	2016-17	2017-18
<p><b>Number of research grants awarded to Marine Division</b>  <u>Assoc. Objective:</u> 3.1.1; 3.1.4  <u>Required by:</u> Agency selected  <u>Best in the Country:</u> There are only a couple of other states with a state laboratory comparable to SC. In many aspects (genetics, stock assessment, fish aging, fish culture, etc.) our lab is superior to others. Florida Fish &amp; Wildlife Research Institute/Florida Fish &amp; Wildlife Conservation Commission is probably the most appropriate analog to our research lab.  <u>Additional Notes:</u> 60 grants annually support the existing staff such that personnel are fully subscribed.</p>	Output	<p><u>Target:</u> DNE  <u>Actual:</u> DNE</p>	<p><u>Target:</u> 60 research grants awarded to Marine Division  <u>Actual:</u> 50 research grants awarded to Marine Division</p>	<p><u>Target:</u> 60 research grants awarded to Marine Division  <u>Actual:</u> 58 research grants awarded to Marine Division</p>	<p><u>Target:</u> 60 research grants awarded to Marine Division  <u>Actual:</u> 61 research grants awarded to Marine Division</p>	<p><u>Target:</u> 60 research grants awarded to Marine Division</p>
<p><b>Number of man days sampling marine fauna</b>  <u>Assoc. Objective:</u> 3.1.1; 3.1.2; 3.1.4  <u>Required by:</u> Agency selected  <u>Best in the Country:</u> The SCDNR lab exceeds all other southeastern states in the amount of effort devoted to monitoring key species (red drum, sea trout, shrimp, blue crab, etc.)</p>	Output	<p><u>Target:</u> DNE  <u>Actual:</u> 3,477 man days</p>	<p><u>Target:</u> 3,900 man days  <u>Actual:</u> 3,910 man days</p>	<p><u>Target:</u> 3,900 man days  <u>Actual:</u> 4,020 man days</p>	<p><u>Target:</u> 3,900 man days  <u>Actual:</u> 4,411 man days</p>	<p><u>Target:</u> 3,900 man days</p>
<p><b>Number of social and economic surveys related to marine resources</b>  <u>Assoc. Objective:</u> 3.1.3  <u>Required by:</u> Agency selected  <u>Best in the Country:</u> No data exists on surveys conducted by other states, but we believe SC probably exceeds other states in surveying its customers because our substantial outreach program is larger than that of other states.</p>	Output	<p><u>Target:</u> DNE  <u>Actual:</u> DNE</p>	<p><u>Target:</u> DNE  <u>Actual:</u> DNE</p>	<p><u>Target:</u> 3 social and economic surveys  <u>Actual:</u> 4 social and economic surveys</p>	<p><u>Target:</u> 3 social and economic surveys  <u>Actual:</u> 5 social and economic surveys</p>	<p><u>Target:</u> 3 social and economic surveys</p>
<p><b>Number of samples for South Carolina Estuarine and Coastal Assessment Programs (SCECAP)</b>  <u>Assoc. Objective:</u> 3.1.1  <u>Required by:</u> Yes, the success of sample collection and processing is reported to NOAA  <u>Best in the Country:</u> We are not aware of any other states that conduct a comprehensive ecological assessment program like that done in SC.</p>	Output	<p><u>Target:</u> DNE  <u>Actual:</u> 299 samples</p>	<p><u>Target:</u> 270 samples  <u>Actual:</u> 299 samples</p>	<p><u>Target:</u> 270 samples  <u>Actual:</u> 300 samples</p>	<p><u>Target:</u> 270 samples  <u>Actual:</u> 270 samples</p>	<p><u>Target:</u> 270 samples</p>



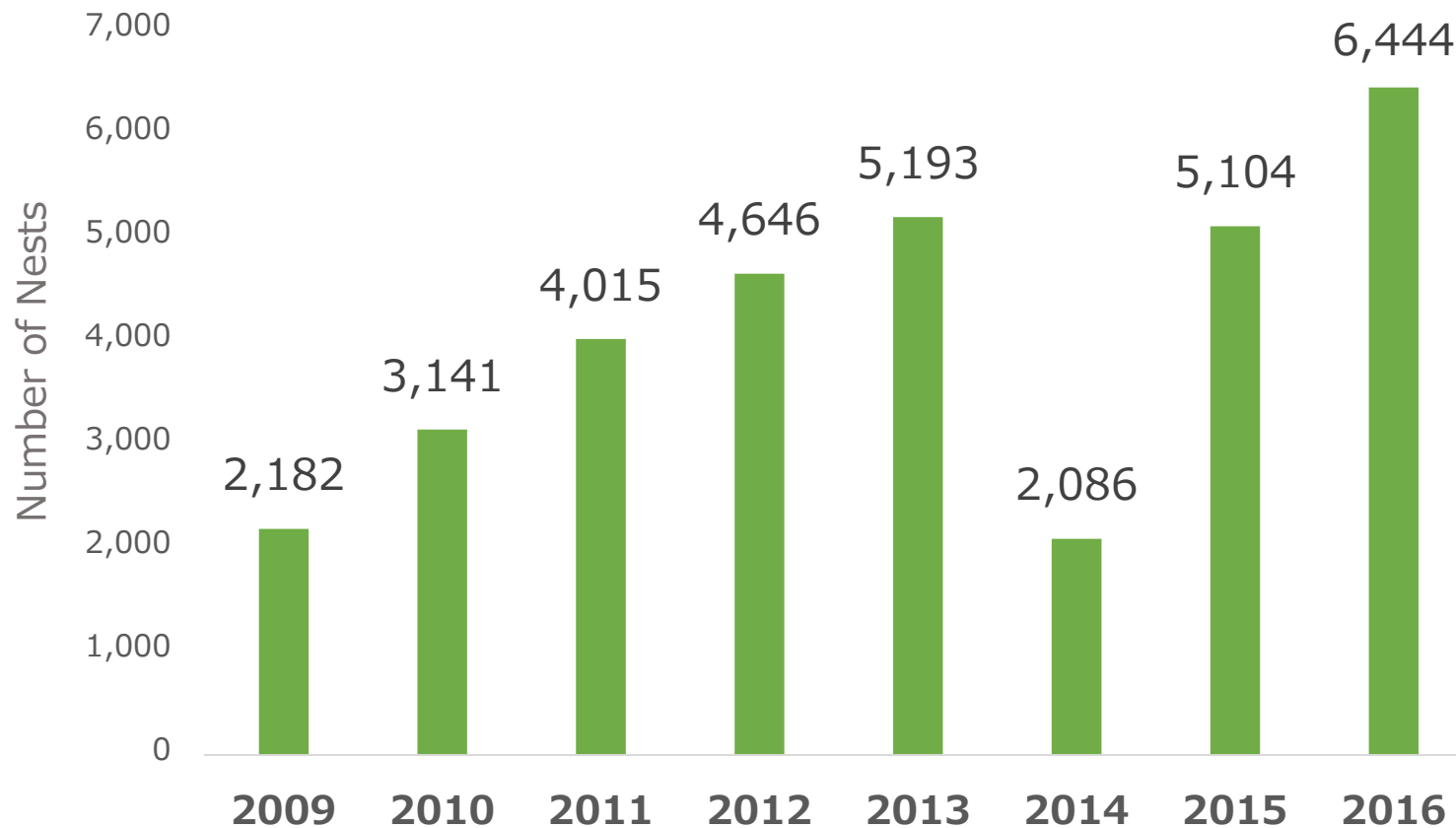
Performance Measure	Type of Measure	2013-14	2014-15	2015-16	2016-17	2017-18
<p><b>Increase loggerhead sea turtle nesting</b> by requiring and enforcing Turtle Excluder Devices (TED) on commercial fishing vessels, protecting turtle nests during breeding season from predators and humans, collecting and analyzing data on nests to determine viability and causes of mortality, with the goal of eventual delisting the species from the endangered species list.</p> <p><u>Assoc. Objective:</u> 3.1.2</p> <p><u>Required by:</u> Federal Government</p> <p><u>Best in Country:</u> SCDNR</p> <p><u>Additional Notes:</u> The recovery plan for the loggerhead sea turtle specifies a recovered population as that indicated by approximately 30,000 nests annually. It is estimated, based on habitat, SC's portion would be 9,200 nests, so that is our target. It is important to note that nesting numbers have been known to fluctuate as adult female turtles nest only once every three years</p>	Outcome	<p><u>Target:</u> Increased turtle nests</p> <p><u>Actual:</u> 5,193</p>	<p><u>Target:</u> Increased turtle nests</p> <p><u>Actual:</u> 2,086 nests</p>	<p><u>Target:</u> increased turtle nests</p> <p><u>Actual:</u> 5,104 nests</p>	<p><u>Target:</u> increased turtle nests</p> <p><u>Actual:</u> 6,444 nests</p>	<p><u>Target:</u> increased turtle nests</p>





R.H. Boyles, Jr. SCDNR

Turtle nesting has generally increased since 2009.







R.H. Boyles, Jr. SCDNR

Strategies and Objectives	2016-17		2017-18	
	FTE equivalents utilized	Total spent	FTE equivalents utilized	Total budgeted
<b>Strategy 3.2 - Manage the Harvest of Marine Resources.</b>				
<p>Objective 3.2.1 - <b>Open and close fishing seasons, as specified by code and provide commercial licenses and permits as required.</b></p> <ul style="list-style-type: none"> <li>Partner(s), by segment: Federal and state government; and private individuals</li> </ul>	6.25 FTE	\$516,139 (0.63%)	6.25 FTE	\$748,958 (0.91%)
<p>Objective 3.2.2 - <b>Determine fishery harvest totals, harvest rates, and fishing effort.</b></p> <ul style="list-style-type: none"> <li>Partner(s), by segment: Federal and state government; and private individuals</li> </ul>	9.15 FTE 8.00 TG	\$1,202,604 (1.46%)	9.15 FTE 8.00 TG	\$1,245,423 (1.51%)
<p>Objective 3.2.3 - <b>Work collaboratively with the regional Fishery Mgt. Councils and Atl. States Mar. Fish. Commission to manage migratory marine species.</b></p> <ul style="list-style-type: none"> <li>Partner(s), by segment: Federal and state government; and private individuals</li> </ul>	3.10 FTE 1.00 TG	\$520,510 (0.63%)	3.10 FTE 1.00 TG	\$553,817 (0.67%)

Performance Measure	Type of Measure	2013-14	2014-15	2015-16	2016-17	2017-18
<p><b>Percentage of Marine Fisheries Harvest Reports Processed within 90 days of end of Month</b>  <u>Assoc. Objective:</u> 3.2.2  <u>Required by:</u> Federal government  <u>Best in the Country:</u> Our rank is equal to the best in the country.</p>	Efficiency	<u>Target:</u> 100% <u>Actual:</u> 100%	<u>Target:</u> 100% <u>Actual:</u> 100%	<u>Target:</u> 100% <u>Actual:</u> 100%	<u>Target:</u> 100% <u>Actual:</u> 100%	<u>Target:</u> 100%
<p><b>Percentage of 15 required Atl. States Mar. Fish. Comm. Species Reports submitted on time</b>  <u>Assoc. Objective:</u> 3.2.3  <u>Required by:</u> Federal government  <u>Best in the Country:</u> Our rank is equal to the best on the Atlantic coast and we think the quality of our reports exceeds other states.</p>	Efficiency	<u>Target:</u> 100% <u>Actual:</u> 100%	<u>Target:</u> 100% <u>Actual:</u> 100%	<u>Target:</u> 100% <u>Actual:</u> 100%	<u>Target:</u> 100% <u>Actual:</u> 100%	<u>Target:</u> 100%
<p><b>Number of commercial marine permits issued</b>  <u>Assoc. Objective:</u> 3.2.1  <u>Required by:</u> Agency selected  <u>Best in the Country:</u> Permit numbers are reflective of the size of a state's coastal zone, and the diversity of species it manages. Given SC has a relatively long coastline, and a relatively high diversity of species, we think SC has more than the average number of permits.  <u>Additional Notes:</u> Permits not controlled by the agency, but based on the number requested.</p>	Activity Measure	<u>Target:</u> DNE <u>Actual:</u> commercial permits issued	<u>Target:</u> DNE <u>Actual:</u> 1,812 commercial permits issued	<u>Target:</u> 1500 commercial permits issued <u>Actual:</u> 1626 commercial permits issued	<u>Target:</u> 1,500 commercial permits issued <u>Actual:</u> 1,511 commercial permits issued	<u>Target:</u> 1,500 commercial permits issued
<p><b>Number of man days sampling marine fauna</b>  <u>Assoc. Objective:</u> 3.2.1  <u>Required by:</u> Agency selected  <u>Best in the Country:</u> The SCDNR lab exceeds all other southeastern states in the amount of effort devoted to monitoring key species (red drum, sea trout, shrimp, blue crab, etc.)</p>	Output	<u>Target:</u> DNE <u>Actual:</u> 3,477 man days	<u>Target:</u> 3,900 man days <u>Actual:</u> 3,910 man days	<u>Target:</u> 3,900 man days <u>Actual:</u> 4,020 man days	<u>Target:</u> 3,900 man days <u>Actual:</u> 4,411 man days	<u>Target:</u> 3,900 man days



R.H. Boyles, Jr. SCDNR

Strategies and Objectives	2016-17		2017-18	
	FTE equivalents utilized	Total spent	FTE equivalents utilized	Total budgeted
<b>Strategy 3.3 - Enhance Marine Fisheries Stocks.</b>				
<p><b>Objective 3.3.1 - Stock Resource as needed to replenish resources.</b></p> <ul style="list-style-type: none"> <li>Partner(s), by segment: State government; private individuals; and non-profit entities</li> </ul>	4.40 FTE 8.15 TG	\$2,123,996 (2.58%)	4.40 FTE 8.15 TG	\$1,409,372 (1.71%)
<p><b>Objective 3.3.2 - Work to ensure artificial reefs continue to sustain marine species and fishing success.</b></p> <ul style="list-style-type: none"> <li>Partner(s), by segment: Federal and local government; private individuals; and non-profit entities</li> </ul>	1.20 FTE 2.45 TG	\$474,700 (0.58%)	1.20 FTE 2.45 TG	\$505,283 (0.61%)
<p><b>Objective 3.3.3 - Ensure the commercial and recreational oyster beds are replenished with shell substrate.</b></p> <ul style="list-style-type: none"> <li>Partner(s), by segment: Non-profit entities; private business; and private individuals</li> </ul>	1.65 FTE 4.25 TG	\$466,374 (0.57%)	1.65 FTE 4.25 TG	\$518,608 (0.63%)



Performance Measure	Type of Measure	2013-14	2014-15	2015-16	2016-17	2017-18
<p><b>Number of Marine Game Fish stocked in coastal waters</b>  <u>Assoc. Objective:</u> 3.3.1  <u>Required by:</u> Agency selected  <u>Best in the Country:</u> Only three other state resource agencies stock marine fish (Mississippi, Texas and California). Mississippi's program is small, releasing only one species. TX and CA have relatively large stocking programs. Given SC's size relative to TX and CA, SC stocks proportionally more fish than all other states and we believe our methods are superior.</p>	Output	<u>Target:</u> DNE <u>Actual:</u> 1,595,570 fish stocked	<u>Target:</u> 1,200,000 fish stocked <u>Actual:</u> 954,577 fish stocked	<u>Target:</u> 1,200,000 fish stocked <u>Actual:</u> 1,370,169 fish stocked	<u>Target:</u> 1,200,000 fish stocked <u>Actual:</u> 2,042,690 fish stocked	<u>Target:</u> 1,500,000 fish stocked
<p><b>Cubic feet of Marine habitat created annually on Marine artificial reefs</b>  <u>Assoc. Objective:</u> 3.3.2  <u>Required by:</u> Agency Selected, but federal permits are required for deployment areas  <u>Best in the Country:</u> SC began the country's artificial reef building. SC remains a leader in the field with respect to new techniques and materials. Florida has much more coastline and more reefs, but SC probably is superior to all other states.</p>	Output	<u>Target:</u> 812,000 cubic feet	<u>Target:</u> 100,000 cubic feet <u>Actual:</u> 85,000 cubic feet	<u>Target:</u> 100,000 cubic feet <u>Actual:</u> 110,000 cubic feet	<u>Target:</u> 100,000 cubic feet <u>Actual:</u> 95,000 cubic feet	<u>Target:</u> 100,000 cubic feet
<p><b>Number of bushels of oyster shucked shell collected</b>  <u>Assoc. Objective:</u> 3.3.3  <u>Required by:</u> Agency selected  <u>Best in the Country:</u> We are aware of only two other shell recycling programs - Chesapeake Bay and Louisiana. We are about equal with these two states in bushels recycled but because we spend much less on our program, our efficiency is much greater.</p>	Output	<u>Target:</u> DNE <u>Actual:</u> 24,552 bushels collected	<u>Target:</u> 30,000 bushels collected (BC) <u>Actual:</u> 28,547 BC	<u>Target:</u> 30,000 BC <u>Actual:</u> 27,434 BC	<u>Target:</u> 30,000 BC <u>Actual:</u> 29,008 BC	<u>Target:</u> 30,000 BC



Strategies and Objectives	2016-17		2017-18	
	FTE equivalents utilized	Total spent	FTE equivalents utilized	Total budgeted
<b>Strategy 3.4 - Engage the general public in protecting and sustaining marine resources through knowledge and personal actions.</b>				
Objective 3.4.1 - <b>Work to ensure school children and teachers are informed about the marine environment.</b> <ul style="list-style-type: none"> <li>Partner(s), by segment: K-12 and higher education institutes; and state government</li> </ul>	1.40 FTE 0.63 TG	\$217,421 (0.26%)	1.40 FTE 0.63 TG	\$220,183 (0.27%)
Objective 3.4.2 - <b>Teach adults and community leaders about cooperative research, sustainable harvesting practices, habitat protection, and understanding marine management.</b> <ul style="list-style-type: none"> <li>Partner(s), by segment: Private individuals</li> </ul>	5.20 FTE 1.95 TG	\$1,611,834 (1.96%)	5.20 FTE 1.95 TG	\$1,720,459 (2.09%)
Objective 3.4.3 - <b>Provide paper and electronic information and literature on marine resources to the public.</b> <ul style="list-style-type: none"> <li>Partner(s), by segment: Non-profit entities; and private businesses</li> </ul>	5.00 FTE 0.13 TG	\$275,687 (0.34%)	5.00 FTE 0.13 TG	\$282,760 (0.34%)
Objective 3.4.4 - <b>Provide the general public with access to high quality recreational opportunities related to marine/coastal natural resources.</b> <ul style="list-style-type: none"> <li>Partner(s), by segment: Non-profit entities, and private businesses</li> </ul>	2.20 FTE 2.13 TG	\$368,822 (0.45%)	2.20 FTE 2.13 TG	\$401,106 (0.49%)

Performance Measure	Type of Measure	2013-14	2014-15	2015-16	2016-17	2017-18
<p><b>Number of school children and teachers informed about the marine environment</b>  <u>Assoc. Objective:</u> 3.4.1  <u>Required by:</u> Agency selected  <u>Best in the Country:</u> We are unaware of any other states that run a program that is as comprehensive as SC's. It is the only program that we know of that provides students with hands-on applied science training.</p>	Output	<u>Target:</u> DNE <u>Actual:</u> DNE	<u>Target:</u> DNE <u>Actual:</u> DNE	<u>Target:</u> 4,500 school children and teachers informed (SCTI) <u>Actual:</u> 5,469 SCTI	<u>Target:</u> 4,500 SCTI <u>Actual:</u> 5,337 SCTI	<u>Target:</u> 4,500 SCTI
<p><b>Number of Anglers in public marine fish tagging program</b>  <u>Assoc. Objective:</u> 3.4.2  <u>Required by:</u> Agency selected  <u>Best in the Country:</u> This volunteer program was the first state-sponsored public tagging program in the country, and is currently the largest of its kind in terms of participation.</p>	Output	<u>Target:</u> DNE <u>Actual:</u> 442 anglers in program	<u>Target:</u> 400 anglers in program <u>Actual:</u> 506 anglers in program	<u>Target:</u> 475 anglers in program <u>Actual:</u> 568 anglers in program	<u>Target:</u> 475 anglers in program <u>Actual:</u> 687 anglers in program	<u>Target:</u> 500 anglers in program
<p><b>Number of coastal vendors who receive MRD resource related literature</b>  <u>Assoc. Objective:</u> 3.4.3  <u>Required by:</u> Agency selected  <u>Best in the Country:</u> We are unaware of any comparable program that any other state has related to creation and distribution of marine resources related literature.</p>	Output	<u>Target:</u> DNE <u>Actual:</u> 116 coastal vendors receive MRD literature (CVRML)	<u>Target:</u> 110 CVRML <u>Actual:</u> 119 CVRML	<u>Target:</u> 110 CVRML <u>Actual:</u> 114 CVRML	<u>Target:</u> 110 CVRML <u>Actual:</u> 113 CVRML	<u>Target:</u> 110 CVRML
<p><b>Number of print, digital, and broadcast media stories that reference Marine Division programs</b>  <u>Assoc. Objective:</u> 3.4.3  <u>Required by:</u> Agency selected  <u>Best in the Country:</u> There is no source of information on output of media stories by marine resource agencies in other states. However, we believe the quality and quantity of our informational stories are equal to or superior to those of other states.</p>	Output	<u>Target:</u> DNE <u>Actual:</u> DNE	<u>Target:</u> DNE <u>Actual:</u> DNE	<u>Target:</u> 180 media stories reference division programs. (MSRFDP) <u>Actual:</u> 240 MSRFDP.	<u>Target:</u> 180 MSRFDP <u>Actual:</u> 304 MSRFDP	<u>Target:</u> 220 MSRFDP
<p><b>Number of individuals permitted for primitive camping on Capers Island</b>  <u>Assoc. Objective:</u> 3.4.4  <u>Required by:</u> Agency selected  <u>Best in the Country:</u> Access to free camping on isolated, undeveloped coastal barrier islands is rare on the Atlantic and Gulf coasts. We believe SC is unique in this regard.</p>	Output	<u>Target:</u> 3,500 <u>Actual:</u> 3,807	<u>Target:</u> 3,500 <u>Actual:</u> 3,809	<u>Target:</u> 3,500 <u>Actual:</u> 3,857	<u>Target:</u> 3,500 <u>Actual:</u> 3,514	<u>Target:</u> 3,500



Strategies and Objectives	2016-17		2017-18	
	FTE equivalents utilized	Total spent	FTE equivalents utilized	Total budgeted
<b>Strategy 3.5 - Provide operational support for MRD research, monitoring, stewardship, and outreach efforts.</b>				
<b>Objective 3.5.1 - Ensure the MRD programs safely and effectively carry out their mission.</b> <ul style="list-style-type: none"> <li>Partner(s), by segment: Federal, state, and local government; higher education institute; and private business</li> </ul>	34.00 FTE	\$3,903,501 (4.75%)	34.00 FTE	\$5,007,934 (6.09%)

Performance Measure	Type of Measure	2013-14	2014-15	2015-16	2016-17	2017-18
<b>Percentage of scheduled vessel days that are accomplished by the Marine Division</b>  <u>Required by:</u> Agency selected <u>Best in the Country:</u> SC Department of Natural Resources <u>Additional Notes:</u> Vessel days are dependent on weather.	Output	<u>Target:</u> DNE <u>Actual:</u> DNE	<u>Target:</u> DNE <u>Actual:</u> DNE	<u>Target:</u> 80% <u>Actual:</u> 71.1%	<u>Target:</u> 80% <u>Actual:</u> 75.1%	<u>Target:</u> 80%

# Marine Resources Division Internal Changes

## **Internal Change #4: Facilitate electronic reporting for required marine harvest reports**

Stage of analysis: Partially implemented, harvest reports may be submitted electronically or in hard-copy form.

Presented and Approved by Board/Commission: No.

Performance measures impacted and predicted impact:  
Timeliness and accuracy of reports.

Costs of the Objective(s) that will be impacted and the anticipated impact:  
Unknown, but expected to reduce cost of compliance.

Anticipated implementation date: Required for-hire reports may be submitted electronically now, option for traditional paper reports remains available for customers who so choose.

# Marine Resources Division Internal Changes

## **Internal Change #5: Broaden the scope and scale of programs at the Waddell Mariculture Center**

Stage of analysis: Under development.

Presented/approved by Board/Commission: No.

Performance measures impacted and predicted impact: None.

Cost of the Objective(s) that will be impacted and the anticipated impact: Minimal.

Anticipated implementation date: 2018.



## Marine Resources Division recommended law changes include:

3-5-100 and 170 (repeal): Oyster leases

50-3-110 (amend): Reference to oyster leases

50-5-17 (repeal): Flounder Population Study

50-5-25 and 50-9-960 (amend): Mariculture Resources and Development Fund

50-5-1950 (repeal): Saltwater Recreational Fisheries Advisory Committee

Regulations 123-20 through 123-34 and 123-35 (repeal): Regulations

## Marine Resources Division recommended law changes include:

3-5-100 and 170 (repeal): Oyster leases

50-3-110 (amend): Reference to oyster leases

50-5-17 (repeal): Flounder Population Study

50-5-25 and 50-9-960 (amend): Mariculture Resources and Development Fund

50-5-1950 (repeal): Saltwater Recreational Fisheries Advisory Committee

Regulations 123-20 through 123-34 and 123-35 (repeal): Regulations

## Marine Resources Division recommended law changes include:

3-5-100 and 170 (repeal): Oyster leases

50-3-110 (amend): Reference to oyster leases

50-5-17 (repeal): Flounder Population Study

50-5-25 and 50-9-960 (amend): Mariculture Resources and Development Fund

50-5-1950 (repeal): Saltwater Recreational Fisheries Advisory Committee

Regulations 123-20 through 123-34 and 123-35 (repeal): Regulations

## Marine Resources Division recommended law changes include:

3-5-100 and 170 (repeal): Oyster leases

50-3-110 (amend): Reference to oyster leases

50-5-17 (repeal): Flounder Population Study

50-5-25 and 50-9-960 (amend): Mariculture Resources and Development Fund

50-5-1950 (repeal): Saltwater Recreational Fisheries Advisory Committee

Regulations 123-20 through 123-34 and 123-35 (repeal): Regulations

## Marine Resources Division recommended law changes include:

3-5-100 and 170 (repeal): Oyster leases

50-3-110 (amend): Reference to oyster leases

50-5-17 (repeal): Flounder Population Study

50-5-25 and 50-9-960 (amend): Mariculture Resources and Development Fund

50-5-1950 (repeal): Saltwater Recreational Fisheries Advisory Committee

Regulations 123-20 through 123-34 and 123-35 (repeal): Regulations

## Marine Resources Division recommended law changes include:

3-5-100 and 170 (repeal): Oyster leases

50-3-110 (amend): Reference to oyster leases

50-5-17 (repeal): Flounder Population Study

50-5-25 and 50-9-960 (amend): Mariculture Resources and Development Fund

50-5-1950 (repeal): Saltwater Recreational Fisheries Advisory Committee

Regulations 123-20 through 123-34 and 123-35 (repeal): Regulations

## Marine Resources Division recommended law changes include:

3-5-100 and 170 (repeal): Oyster leases

50-3-110 (amend): Reference to oyster leases

50-5-17 (repeal): Flounder Population Study

50-5-25 and 50-9-960 (amend): Mariculture Resources and Development Fund

50-5-1950 (repeal): Saltwater Recreational Fisheries Advisory Committee

Regulations 123-20 through 123-34 and 123-35 (repeal): Regulations



R.H. Boyles, Jr. SCDNR